

Parameter

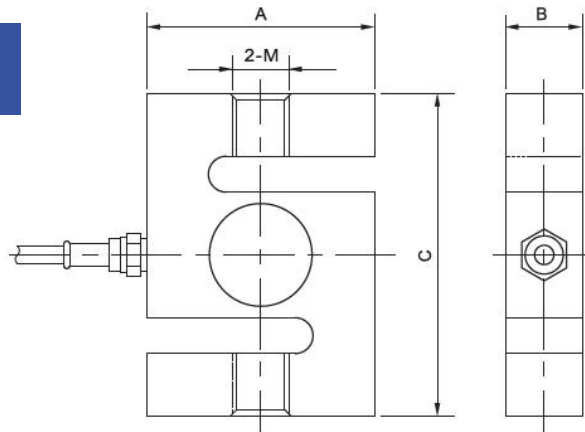
Material 材料: Alloy 合金钢, Stainless 不锈钢
 Capacity 量程: 5kg-20t
 Rated Output 额定输出: 2mV/V, 3mV/V
 Non Linearity 非线性: $\pm 0.02\%F.S.$
 Hysteresis 滞后: $\pm 0.02\%F.S.$
 Repeatability 重复性: $\pm 0.01\%F.S.$
 Creep (30min) 蠕变: $\pm 0.02\%F.S.$
 Zero Balance 零点输出: $\pm 1.00\%F.S.$
 Tem.Effect on Zero 零点温度系数: $\pm 0.02\%F.S./10^{\circ}C$
 Tem.Effect on Output 额定输出温度系数: $\pm 0.02\%F.S./10^{\circ}C$

Application

Electro-Mechanical Scale, Crane Scale, Hopper Scale, and Special Designed Scales
 适用于机电结合秤、吊钩秤、料斗秤及各种专用秤
 Accessories: Rod End Bearing
 配件: 关节轴承

Input Impedance 输入电阻: $385 \pm 10\Omega$
 Out Impedance 输出电阻: $350 \pm 3\Omega$
 Insulation Impedance 绝缘电阻: $\geq 5000M\Omega$
 Excitation Voltage 供桥电压: 10V (DC/AC)
 Compensated Tem.Range 补偿温度范围: $-10^{\circ}C \sim +50^{\circ}C$
 Service Tem.Range 使用温度范围: $-20^{\circ}C \sim +60^{\circ}C$
 Safe Overload Range 安全过载: $120\%F.S.$
 Protection Class 防护等级: IP67, IP68
 Cable length 电缆长度: 5m
 Wire Code 接线方式: Red 红 (Ex+) Black 黑 (Ex-)
 Green 绿 (Sig+) White 白 (Sig-)

Outline Dimensions



Capacity		Size mm			Thread		N.W.
Klb	Kg	A	B	C	Metric	Inch	kg
0.025-0.15	5-50	51.0	13.0	64.0	M8*1.25	1/4-28	0.5
0.2-1.5	100-500	51.0	19.1	76.0	M12*1.75	1/2-20	0.5
2-4	1t-2t	54.0	25.4	76.0	M12*1.75	1/2-20	0.8
5-10	2.5t-5t	76.0	25.4	108.0	M18*1.5	3/4-16	1.6
15	7.5t	100.0	32.0	140.0	M24*2	1-14	3.0
20	10t	126.0	50.0	178.0	M30*2	1 1/4 -12	7.0
30-40	15t-20t	140.0	60.0	188.0	M39*2	1 1/2 -12	12.0

